

Organized by



UNITED | Scientific Group
A non-profit organization

OBESITY
November 04-06, 2024 | London

Tentative Program

8th International Conference on

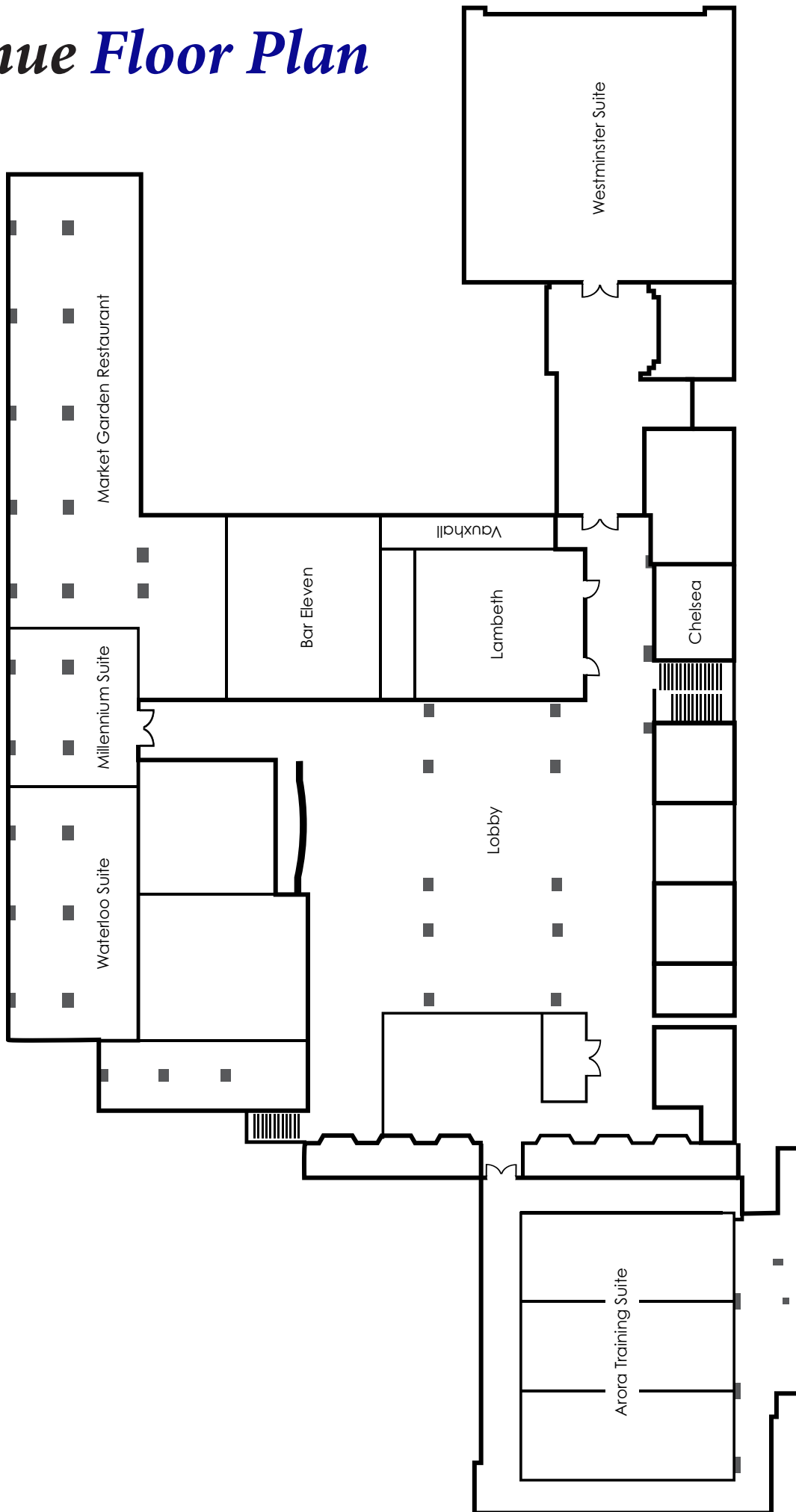
OBESITY AND CHRONIC DISEASES (ICOCD-2024)

November 04-06, 2024 | London

 Renaissance London Heathrow Hotel, Bath Road,
Hounslow, Middlesex TW6 2AQ, London



Venue Floor Plan



Meeting Agenda Overview

November 04, 2024

Day-1

08:00-08:20	Registration and Conference Material Collection
08:20-08:30	Introduction
08:30-10:30	Session: New Directions in Obesity Managements and Treatments
10:30-10:50	Coffee Break
10:50-12:40	Session: Obesity and Type 2 Diabetes
12:40-13:40	Lunch Break
13:40 – 16:30	Session: Obesity: Basic, Translational and Clinical Research
16:30-16:50	Coffee Break
16:50-18:00	Poster presentations
19:30-21:30	Social & Networking Events

November 05, 2024

Day-2

08:30-10:30	Session: Obesity and Pregnancy
10:30-10:50	Coffee Break
10:50-12:40	Session: Obesity and Cardiovascular Disease
12:40-13:40	Lunch Break
13:40-16:10	Session: Pediatric Obesity
16:10-16:30	Coffee Break
16:30 – 18:00	Session: Bariatric and Metabolic Surgery

November 06, 2024

Day-3

08:30-09:30	Session: Biomarkers in Obesity and Related Disorders
09:30-10:50	Session: Eating Disorders, Lifestyle and Other Factors/Genetic Epidemiology of Obesity
10:50-11:10	Coffee Break
11:10- 12:30	Session: Nutritional Science in Managing Obesity and Related Disorders
12:30-13:30	Session: Obesity and Mental Health

13:30 Lunch and Departure

08:00-08:20 Registration and Conference Material Collection

08:20-08:30 Introduction

Session: New Directions in Obesity Managements and Treatments

Coordinated Medical and Dental Training for Interdisciplinary Management of Bariatric Patients

Nadejda Stefanova Stephens, University of Rochester, United States

A Systematic Review and Meta-analysis: Ways to go with the future Online Intervention Modalities of Obesity and Overweight care for Middle-Aged Adults

Kyung Jung Han, California State University, Bakersfield, United States

Obesity and Stroke- Significant Comorbidities and Long Term Management

Atri Ghosh, Salford Royal Hospital, United Kingdom

Modern Digital Devices or Tools in Obesity Management and Therapy in Nigeria

Adekoya Adeniyi Samuel, Sam Obesity Consult, Nigeria; Federal Cooperative College, Ibadan, Nigeria

In Vivo and In Vitro Evaluation of Saccharomyces Boulardii Strains Expressing Surface-Displayed Pancreatic Lipase Inhibitor Peptides: A Potential Anti-Obesity Probiotic

Mahsa Nayebhashemi, Pasteur Institute of Iran, Iran

Potential Molecular Mechanisms of Bisphenol A in Obesity Development

Mehdi Koushki, Zanjan University of Medical Sciences, Iran

Coffee Break

Session: Obesity and Type 2 Diabetes

An Observational Study, Investigating the Frequency and Spread of Incidences of Constipation and Diarrhoea in Participants of the Nhs Type 2 Diabetes Path to Remission Programme

Sukhvinder Bhakar, Xyla Health and Wellbeing, United Kingdom

Advancements in Predicting Diabetes Biomarkers: A Machine Learning Epigenetic Approach

James Ladzekpo, Western Michigan University, United States

Abnormal Left Ventricular Systolic Reserve Function Detected by Treadmill Exercise Stress Echocardiography in Asymptomatic Type 2 Diabetes

Yuyou Duan, Chongzhou Peopel's Hospital, China

Effects of Type 2 Diabetes on Mortality and Immunity Responses in Sepsis Patients: A Retrospective Cohort Study

Qingxia Du, The Affiliated Tongren Hospital of Capital Medical University, China

Protective Effect of Jiang Tang Xiao Ke Granule Against Skeletal Muscle Ir Via Activation of Ampk/Sirt1/Pgc-1 α Signaling Pathwa.

Dandan Zhao, Beijing University of Chinese Medicine, China

Obesity and its Association with Diabetes and Hypertension among Young Adult Population in Bangladesh- A Nationwide Survey

Hajera Mahtab, Centre for Global Health Research, India

Diabetes Mellitus: Preventive and Curative Therapies with Aqueous Extract of Rytigynia Senegalensis Blume (Rubiaceae) in Wistar Rats

Miaffo David, University of Maroua, Cameroon

Findrisc as Screening for Detection of Prediabetes and Unknown Type 2 Diabetes.

Horacio Miguel Peralta, Sanatorio Regional, Argentina

The Burden of Dyslipidemia and Determinant Factors Among Type 2 Diabetes Mellitus Patients at Hawassa University Comprehensive Specialized Hospital, Hawassa, Ethiopia

Worku Ketema Bedada, Hawassa University, Ethiopia

Outcome of Diabetic Keto Acidosis Treatment and Associated Factors Among Adult Patients Admitted to Emergency and Medical Wards at St. Paul's Hospital, Addis Ababa Ethiopia, 2023: A Cross-Sectional Study
Tekalign Markos Chamiso, St. Paul's Hospital Millennium Medical College, Ethiopia

Micrnas Dependent G-Elns Based Intervention Improves Glucose and Fatty Acid Metabolism While Protecting Pancreatic B-Cells in Type 2 Diabetic Mice
Geetika Bajaj, National Agri-Food Biotechnology Institute, India

Drugs Usage Patterns Among Type II Diabetes Patients of a Tertiary Care Teaching Hospital
Rajesh Kumar Suman, Hind Institute of Medical Sciences, India

Lunch Break

Session: Obesity: Basic, Translational and Clinical Research

Weight Management in Cardiac Rehabilitation; Assessment & Intervention; Literature Review
Naglaa Hussein, Alexandria University, United States

Anterior Pituitary Transcriptomics Following a High Fat Diet: Impact of Oxidative Stress on Cell Metabolism and Plasticity
Gwen Childs, University of Arkansas for Medical Sciences, United States

Evaluating Experimental Injuries to Obese Occupants in Frontal Impacts: The Role of Posture and Seat Stiffness
Karthik Somasundaram, Medical College of Wisconsin, United States

Live Healthsmart a Modelt O Reduce Obesity in Underserved Populations
Mona Fouad, University of Alabama at Birmingham, United States

Role of Malic Enzyme 1 (Me1) in Obesity, Weight Loss and Insulin Signaling
John Mark P. Pabona, University of Arkansas for Medical Sciences; Chi St. Vincent, United States

Sera Metabolite Changes in Obesity-Induced MASLD, Assayed with Metabolomic Approaches
Helena Yong, UCL, United Kingdom

Bariatric Surgery and Suicide.
Arturo Roizblatt, Department of Psychiatry Faculty of Medicine Universidad De Chile, Chile

Extreme Lifetime Body Mass Index Trajectories are Associated with Contrasting Lung Function Abnormalities in Mid-Adulthood: Tasmanian Longitudinal Health Study.
Gulshan Bano Ali, The University of Melbourne, Australia

Evaluation of a Weight Stigma Education Module in Dentistry and Oral Health Therapy Students
Zanab Malik, The University of Newcastle, Australia

Relationship Between Household Activities and Body Mass Index of Housewives.
Raji Roqeeb Babatunde, Manipal Academy of Higher Education (MAHE), India

Obesity Prevalence Factors Associated with Sympathetic Overactivity and Hypertension
Arshad Mehmood, The Second Hospital of Hebei Medical University, China

The Association Between Alcohol Intake and Obesity in a Sample of the Irish Adult Population, A Cross-Sectional Study
Salma Alkalbani, Moh, Oman

Six Novel Nssnps affect Runx1 Gene May Leading to Acute Myeloid Leukemia (Aml) using Bioinformatics Approach
Dalia Omer, Alneelain University, Sudan

The Effect of a Low-Calorie, High-Protein Diet on Psychometric Variables in Obese Individuals: A Randomized Clinical Trial
Fatemeh Sadat Hashemi Javaheri, Mashhad University of Medical Sciences, Iran

Empirical Dietary Inflammatory Index and Lifestyle Inflammation Score Relationship with Obesity: A Population-Based Cross-Sectional Study
Seyedeh Tayebeh Rahideh, Iran University of Medical Sciences, Iran

L-Arginine Supplementation Impacts on Anthropometric Indices and Sport Performance in Athletes: A Randomized Clinical Trial
Naseh Pahlavani, Torbat Heydariyeh University of Medical Sciences, Iran

Coffee Break

Poster presentations

- P01 Effectiveness of Lifestyle Interventions in Treating Pediatric Obesity: A Systematic Review and Multivariate Meta-Analysis**
Sami Yli-Piipari, University of Georgia, United States
- P02 Effects of Video Game Avatar Size on Eating and Exercise Habits in Females**
Bryan Raudenbush, Wheeling University, United States
- P03 Effect of Liraglutide on the Weight and Body Composition of People with Obesity: Presentation of Two Case Reports**
Luisa Bellachioma, Maria SS. Dello Splendore Hospital, Italy
- P04 Efficacy of Interventions Aimed at Reducing Explicit and Implicit Weight Bias in Healthcare Students: A Systematic Review and Meta-Analysis**
Ravisha S. Jayawickrama, Curtin University, Australia, Australia
- P05 The Correlation Between Leg Muscle Mass Index and Non-Alcoholic Fatty Liver Disease in Patients with Type 2 Diabetes Mellitus**
Xiaoqing Yuan, Nanjing Medical University, China
- P06 Kidney Transplant Outcome Comparison Between Obesity Recipients Group and Non-Obesity Group**
Zhang-Fei Shou, Zhejiang Shuren University, China
- P07 Comparison of Different Methods for the Central Obesity Evaluation**
Anastasiia Nahorna, Bern University of Applied Sciences, Switzerland
- P08 Hormonal Imbalances Observed in Pre-Diabetes Participants Based in Durban, South Africa.**
Aubrey Mbulelo Sosibo, University of Kwazulu-Natal, South Africa
- P09 Sphingomyelin Spectrum of Blood Serum in Cardiovascular Diseases**
Belik E, Federal State Budgetary Scientific Institution Research Institute, Russia
- P10 Expression of Ceramide Synthesis Enzymes in the Adipose Tissue of the Heart of Patients with Coronary Artery Disease. Relationship with the Degree of Coronary Lesion**
Yulia Dyleva, Federal State Budgetary Scientific Institution, Russia
- P11 Characteristics of Surface Markers of Stem Cells Isolated from Adipose Tissue of the Heart and Coronary Vessels**
Evgenya Uchasova, Federal State Budgetary Scientific Institution, Russia
- P12 Association of Body Mass Index Increase and the Presence of Urinary Tract Infection in Primi gravidae**
Kenia Tornel Miguel, Instituto Mexicano Del Seguro Social, Mexico
- P13 Valuation of the Impact of Low-Energy Ketogenic Diet Versus A Low-Energy Non Ketogenic Diet on Metabolic Dysfunction-Associated Steatotic Liver Disease (MASLD) in Obese Patients**
PatraCia Meira, Hospital Da Senhora Da Oliveira, Guimarães, Portugal
- P14 Clinical Profile of Patients with Stage II Hypertension Depending on the Presence of Premorbid Obesity**
Nataliia Kuzminova, National Pirogov Memorial Medical University, Ukraine
- P15 Estimates of Global and Regional Prevalence of Helicobacter Pylori Infection among Individuals with Obesity: A Systematic Review and Meta-Analysis**
Alireza Sadeghi, Shiraz University of Medical Sciences, Iran
- P16 Risk Factors for Pancreatic Necrosis in Acute Pancreatitis in Obese Patients**
Kovalska Inna, National Medical University Named After Bohomolets, Ukraine
- P17 Risk Factors for Pancreatic Necrosis in Acute Pancreatitis in Obese Patients**
Tetiana Ivanets, Bogomolets National Medical University, Ukraine
- P18 Effect of Reduced Dietary Fat on Estradiol, Adiponectin, and IGF-1 Levels in Postmenopausal Women with Breast Cancer**
Blanca Olivia Murillo Ortiz, Instituto Mexicano Del Seguro Social, Mexico

- P19** **Interaction Between Orexinergic and GLP-1 Systems: Does this Dynamic Interplay Modulate Epilepsy?**
Filiz Onat, Acibadem University, Turkey
- P20** **High-Protein and Rich-Fat Diet Attenuates Dietary-Induced Obesity**
Xinli Yang, Capital Medical University, China
- P21** **Effects of Maternal High-Fat Diet on Fetal Growth, Placental Nutrient Transporters and Circular RNA Expression Profiles**
Tianle He, China Agricultural University, China
- P22** **The Longitudinal Association of Body Weight Misclassification in Adolescence with Body Fat and Waist Circumference in Adulthood**
Abdulaziz Aloufi, Ministry of Health, Saudi Arabia
- P23** **What is the Effect of Mobile Phone Text Message Reminders on Medication Adherence among Adult Type 2 Diabetes Mellitus Patients: A Systematic Review and Meta-Analysis of Randomized Controlled Trials**
Abebe Muche Belete, University of Ghana, Ghana
- P24** **Tangshen Formula Improves Diabetic Nephropathy in STZ-Induced Diabetes Rats Fed with Hyper-Methionine by Regulating the Methylation Status of Kidney**
Liang Ma, China-Japan Friendship Hospital, China
- P25** **Association of Serum Levels of Soluble Triggering Receptor Expressed on Myeloid Cells-1 with Type 2 Diabetes in Endothelial Dysfunction**
Wenjun Sha, Shanghai University of Traditional Chinese Medicine, China
- P26** **Absence of the Vagus Nerve and Anemia affect Glucose Homeostasis**
Ellen Carolina Zawoski Gomes, Universidade Estadual Do Oeste Do Paranaj, Brazil
- P27** **Advances in Polatuzumab Vedotin-PIIQ Therapy: A Review of Treatment Efficacy in Diffuse Large B Cell Lymphoma and High-Grade B Cell Lymphoma**
Tagwa Kalool Fadlalla Ahmad, Ahfad University for Women, Sudan
- P28** **Prevalence of Depression in Patients with Type 1 Diabetes Between 10 and 17 Years of Age in Jordan**
Sarah Ibrahim, Jordan University, Jordan
- P29** **Fasting Insulin Level is Negatively Associated with the Telomere Length in Mexican Children.**
Blanca Olivia Murillo Ortiz, Instituto Mexicano Del Seguro Social, Mexico
- P30** **Association Between Obesity Indicators and Depression in Korean Adults**
Hyo Jin Park, Ewha Womans University Seoul Hospital, Korea (South)
- P31** **Associations Between HT, BMI, and Allergic Rhinitis in Perimenopausal Women**
Xueyang Wang, Beijing Shijitan Hospital, Capital Medical University, China
- P32** **Oligogenic Inheritance in Severe Adult Obesity**
Sumaya Almansoori, Imperial College London, United Kingdom
- P33** **Exploring Urban-Rural Differences in 24-H Movement Behaviours among Tunisian Preschoolers: Insights from the SUNRISE Study**
Mohamed Amine Ltifi, Laboratoire De Recherche, Tunisia
- P34** **Interplay Between Fetal Hemoglobin, Micronutrients and Oxidative Stress Biomarkers in Sickle Cell Anemia Children**
Wina Ivy Ofori Boadu, Kwame Nkrumah University of Science and Technology, Ghana
- P35** **Early-Induced Diabetic Obese Rat MACAPOS 2**
Noubissi Paul Aime, University of Buea, Cameroon
- P36** **Comparison of the Effect of Resistance Versus Aerobic Exercise on the Serum Levels of Salusin-A and Salusin-B, Lipid Profile and Insulin Resistance in Overweight/Obese Women.**
Mahnaz Omid, Azad University of Ilam, Iran

Social and Networking Events

Session: Obesity and Pregnancy

To Analyse the Obstetric Risks and to Evaluate the Effects of Maternal Obesity During Pregnancy and Postpartum Period

Amala Sunder, Bahrain Defense Force Hospital, Bahrain

The Effect of Bariatric Surgery on Infertility in Obese Females

Mostafa Mohammed Ibrahim Darwesh, Faculty of Medicine Al Azhar University, Egypt

Irrigation of Subcutaneous Tissue to Reduce Wound Infection in Cesarean Section in Obese Women Egypt

Mohamed Sayed Ahmed Kasem, Al-Azhar University, Egypt

Maternal Age and Body Mass Index as Risk Factors for Rectovaginal Colonization with Group B Streptococci

Mohammed Rohi Khalil, Kolding University Hospital, Denmark

Oxidized Palm Oil Impairs Reproductive Functions and Architectures in Female Rats

Wankeu-Nya Modeste, University of Douala, Faculty of Science, Cameroon

Multicomponent Lifestyle Intervention Support After Pregnancy

Elnura Halmambetova, Linneaus University, Sweden

Coffee Break

Session: Obesity and Cardiovascular Disease

Undiagnosed Hypertension and its Determinant among Hypertensive Patients in Rural Districts of Northwest Ethiopia: A Mediation Analysis

Destaw Fetene Teshome, University of Gondar, Ethiopia

The Differentiation of Adipose Tissue Mesenchymal Stem Cells into Endothelial Cells to Induce Angiogenesis Depends on Fat Depot Conditions

Gemma Arderiu, Institut De Recerca Sant Pau, Spain

Brachial-Ankle Pulse Wave Velocity as a Risk Factor for High Body Fat Mediated by Blood Pressure

Jun Ma, Department of Cardiology, Clinical Medical College & Affiliated Hospital of Chengdu University, China

Comparison of Changes in the Combination of the Triglyceride-Glucose Index and Obesity Indicators for Predicting the Risk of Cardiovascular Disease

Xiaoqing Zhu, Chinese PLA General Hospital, China

Fatty Liver is: The Strongest Predictor of Coronary Artery Disease

NIMER ASSY, GMC, Israel

Assessment of Correlation Between Tyg Index and the Prognosis of Patients of CHF and Type 2 Diabetes: A Retrospective Cohort Study

Uma Bhandari, Jamia Hamdard (Hamdard Deemed to be University), India

The Association of Body Mass Index Variability with Cardiovascular Disease and Mortality: A Mediation Analysis of Pooled Cohorts

Ladan Mehran, Shahid Beheshti University of Medical Sciences, Iran

Prevalence and Factors Associated with Suboptimal Blood Pressure Control Among Ambulatory Participants with Diabetic Kidney Disease Attending a Tertiary Hospital in Uganda

David Wamala, Mulago Hospital, Uganda

Study of Body Composition, Clinical and Metabolic Profile of Non-Obese Individuals

Devendra Kumar Jain, AIIMS, India

Effects of Flaxseed Supplementation on Weight Loss, Lipid Profiles, Glucose, and High-Sensitivity C-Reactive Protein in Patients with Coronary Artery Disease: A Systematic Review and Meta-Analysis of Randomized Controlled Trials

Mehdi, Fars-Iranian Heart Association, Iran

Lunch Break

Session: Pediatric Obesity

The Teen Program, An Innovative Approach to Address Pediatric Obesity

Shirley Gonzalez, Tufts University School of Medicine, United States

TBA

Ahlee Kim, Children's Hospital Los Angeles, United States

What do Parents think about Child's Routine Height and Weight Measures? A Qualitative Study

Slavica Krstic, Primary and Community Health SWS: HD, Australia

Evaluation of Relationship Between Body Mass Index (BMI) and Dental Development in Age Group of 6-13 Yrs in Children of Malwa Region-A Cross Sectional Study

Vaishali Selkari, Government College of Dentistry, India

TBA

Saryia Javed, NHS GG&C, United Kingdom

Neck Circumference as a Measure for Pediatric Obesity in Predicting Respiratory Adverse Events During Anesthesia

Marwan Al-Mashhadani, Medical City, Ministry of Health, Iraq

Coffee Break

Session: Bariatric and Metabolic Surgery

Novel Approach for Complicated Stoma Management in Obese Patient

Feras Aljarad, NHS Fife, United Kingdom

Significance of Oral Disposition Index Calculated from Meal Tolerance Test to Evaluate Normalization of Post-Prandial Glucose and Triglyceride Metabolism in Morbidly Obese Patients After Laparoscopic Sleeve Gastrectomy

Yukako Yamamoto, Omi Medical Center /Diabetes and Endocrinology, Japan

Qualitative and Economic Impact of Standardized and Digitalized Operation Room Processes in Obesity Surgery

Ralf Weise, St. Marien-Hospital Friesoythe Ggmbh, Friesoythe, Germany

Surgical Approach for the Failure of Gastrointestinal Anastomosis after Roux-En-Y Gastric Bypass

Vladimir Stankevich, Federal Scientific and Clinical Center for Specialized Medical Assistance and Medical Technologies of The Federal Medical Biological Agency, Russian Federation

Laparoscopic Sleeve Gastrectomy Following Failed Laparoscopic Adjustable Gastric Banding - A Comparison Between One-and Two-Stage Procedures, our Combined Experience using both an Israeli National Database Study, and a Retrospective Cohort Study.

Zvi H Perry, Soroka University Medical Center, Israel

Key Risk Factors and Reasons for All-Cause Readmission Following Bariatric Surgery: A Systematic Review and Meta-Analysis

Yeong Huei Desmond Chuah, St Vincent's University Hospital, Ireland

Robot Assisted Bariatric Surgery in a Superobese Patient

Marina Epstein, Vila Nova Star Hospital, Brazil

The Impact of a Preoperative Evaluation Process on Weight Reduction and Glycemic Control in Patients Undergoing Bariatric and Metabolic Surgery

Jennifer Tempany, NHS Ayrshire & Arran, United Kingdom

Bariatric Arterial Embolization (BAE): A New Endovascular Mini-Invasive Procedure for Obesity Treatment

Gustavo Samaja, Sanatorio Colegiales, Argentina

Laparoscopic Gastric Plication: A Long-Term Follow-Up and Comparison of Outcomes in Severe Vs. Non-Severe Obesity

Mohammad Reza Fattahi, Tehran University of Medical Sciences, Iran

Comparison of the Onset of Action, Maintenance, and Recovery of Three Weight- Based Dosing of Cisatracurium in Patients with Morbid Obesity in Laparoscopic Bariatric Surgery: A Randomized Clinical Trial

Soudabeh Djalalimotlagh, Iran University of Medical Sciences, Iran

Long-Term Outcomes of Bariatric Surgery: An Eight-Year Study at a Tertiary Care Hospital in Lebanon

Rana Ibrahim, Saint George Hospital, Lebanon

Session: Biomarkers in Obesity and Related Disorders**Maternal Undernutrition Alters Offspring Pituitary Proteome and Male Transcriptome, Promoting Resistance to High-Fat Diet-Induced Weight Gain**

Tiffany Miles, University of Arkansas for Medical Sciences, United States

Proteomic and Metabolomic Manifestations of Different Variants of Apolipoprotein E Genes Polymorphism in Obese Patients

Sentsova, Pirogov Russian National Research Medical University, Russia

Study on Secreted Frizzled Related Protein 4 (Sfrp4) and Trace Elements in Metabolic Syndrome

Preeti Sharma, Autonomous State Government Medical College, Fatehpur, India

Risk Factors for Pancreatic Necrosis in Acute Pancreatitis in Obese Patients

Tetiana Ivanets, Bogomolets National Medical University, Ukraine

Session: Cancer and Obesity Link**Immune Checkpoint Inhibitor- And Phosphatidylinositol-3-Kinaseinhibitor-Related Diabetes Induced by Anti-neoplastic Drugs: Two Case Reports and A Literature Review**

Yue Gao, Xiaogan Central Hospital, China

Session: Eating Disorders, Lifestyle and Other Factors/ Genetic Epidemiology of Obesity**Developing Healthy Lifestyle Behaviors in Early Age-An Intervention Study in Kindergartens**

Ronit Jakobovich, Tel Aviv University, Israel

The Holobiont: Dual Inheritance and Immune-Gut-Brain Triangle

David Smith, Norcel, United Kingdom

Comparison of Prevalence and Mental Health Problems Across Symptom Frequency of Self-Reported Symptoms of Binge-Eating Disorder in A Community Sample of Adolescents

Sofie Thor Andersen, The Association for Eating Disorders and Self-Injury, Denmark

Changes in Abdominal Fat after Smoking Cessation in an Exercise Intervention Among Sedentary Female Smokers

Anu Ranjit, University of Helsinki, Finland

The Association Between Nutritional Status and The Quality of Life of Covid-19 Patients in Saudi Arabia: A Cross-Sectional Study

Ahlam Badreldin El Shikieri, Taibah University, Saudi Arabia

Sarcopenia Evaluation in Type 2 Diabetes Mellitus Patients; Do we need to revise our Sarcopenia cut Offs? A Case-Control Study from India

Shinjan Patra, All India Institute of Medical Sciences Nagpur, India

Coffee Break**Session: Nutritional Science in Managing Obesity and Related Disorders****Evidence Based Dietary Pattern in South Asian Patients: Setting Goals**

Ananya Pappu, Mayo Clinic, United States

Tryptophan Metabolite ITE Attenuates LPS-Induced MMP-9 Expression in Monocytic Cells Via NF-Kb/AP-1 Axis

Fatemah Bahman, Dasman Diabetes Institute, Kuwait

Diet of a Protein Ingredient Linked to Reduction of Fat in Host Animals.

Pil Kim, The Catholic University of Korea, Korea (South)

The Role of Functional Foods in Dietary Management of Obesity

Sarah Evbuomwan, Olive Model Group of Schools, Nigeria

Dose-Dependent Effect of Tart Cherry on Selected Cardiometabolic Risk Factors: A Grade-Assessed Systematic Review and Dose-Response Meta-Analysis of Randomized Controlled Trials

Seyedeh Tayebbeh Rahideh, Iran University of Medical Sciences, Iran

Session: Obesity and Mental Health

The Silent Struggle-Obesity's Overlooked Impact on Mental Health

Alka Farmer, Cooper University Hospital, United States

Mental Health, Learning, and Family Factors in Pediatric Obesity

Michael Capawana, Harvard Medical School, United States

Body Mass Index and Death by Cognitive Impairment

Miao Liu, Chinese PLA General Hospital, China

Obesity and Mental Health

Aybuke Erkul, Harran University, Faculty of Medicine, Turkey

Increased Body Mass Index of Women Exposed to War Stress

Nataliia Kuzminova, National Pirogov Memorial Medical University, Ukraine

Group Intervention as a Therapeutic Method for Obesity in Young Adults: A Psychodynamic Approach

Daria Druzhinenko-Silhan, Psinstitut Université de Strasbourg, France

Rafaela Brandao Alves, PSInstitut, France

Nadine Bahi, PSInstitut Université de Strasbourg, France

Olivier Putois, Université de Strasbourg, France

Lunch Break and Departure

***This is a tentative program for the conference and is subjected to change without any prior notice**

We wish to see you at

ICOCD-2024

November, 2024 London, UK

Organized by



UNITED | Scientific
Group
A non-profit organization

USG-United Scientific Group

(A non-profit Organization)

8105, Suite 112, Rasor Blvd, PLANO, TX 75024

Telephone: +1-469-854-2280/81; **Toll Free:** +1-844-395-4102 **Fax:** +1-469-854-2278

Email: obesity@uniscigroup.org; mamatha.m@uniscigroup.net

Web: <https://icocd.unitedscientificgroup.org/>